

# Floor Plan STONEHAVEN

*Located in Wohali Village*



4 Bedrooms

6 Bathrooms

2-Car Garage

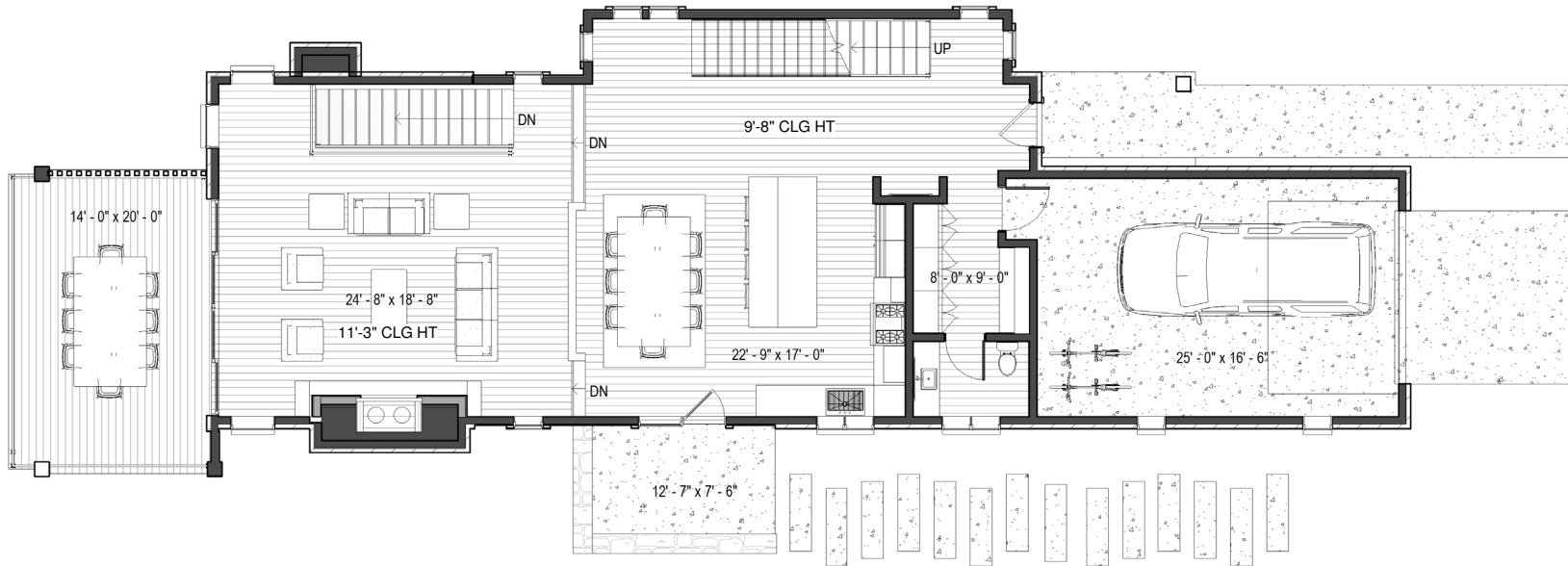
Customizable "Dream" Space

Total - 4,915 SF



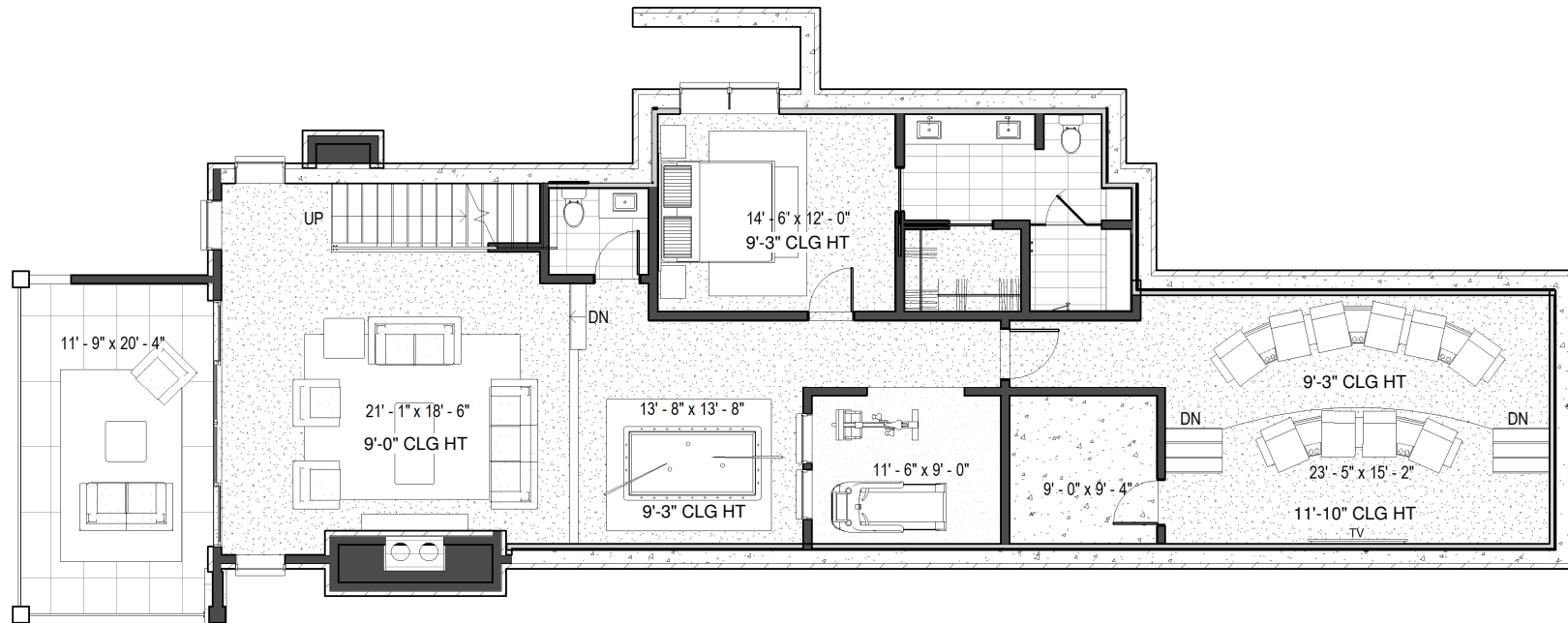
# MAIN LEVEL

Main Level - 1,461 SF / Deck - 270 SF / Garage - 469 SF



# LOWER LEVEL

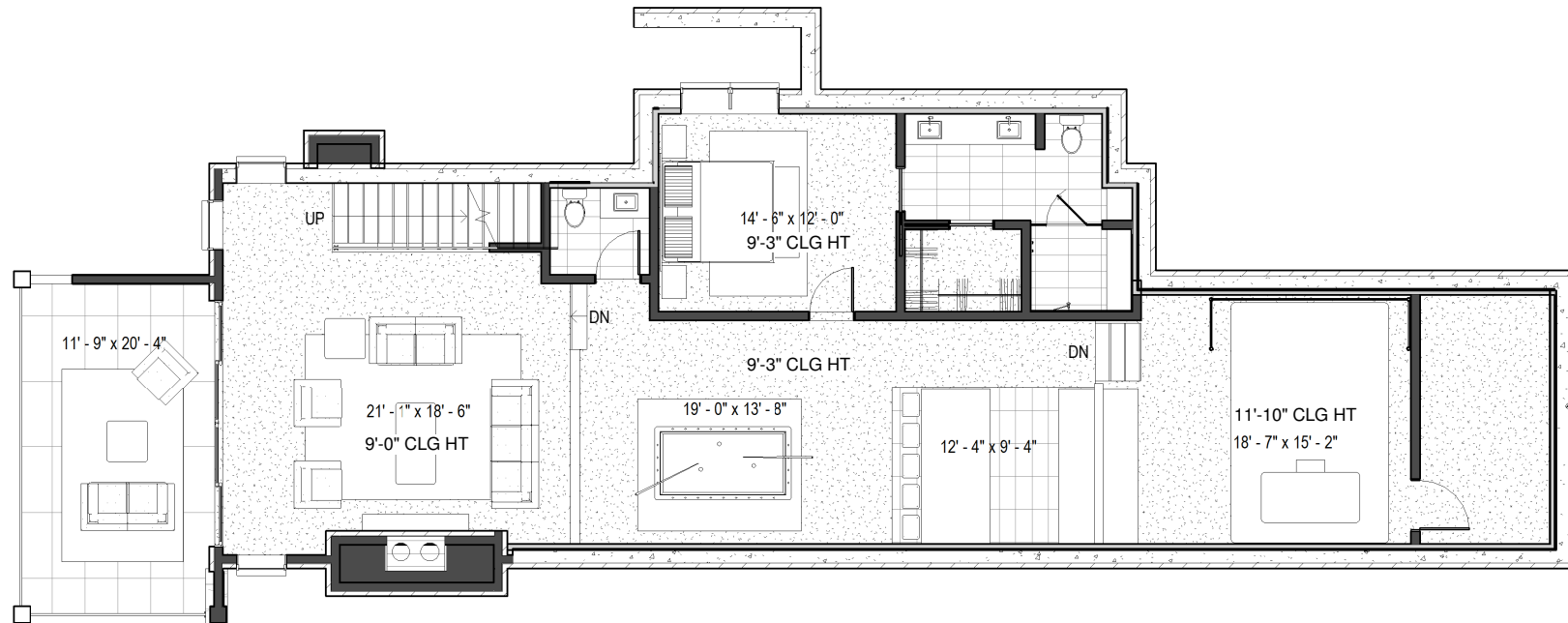
Lower Level - 1,895 SF / Deck - 250 SF / Mechanical - 102 SF



# LOWER LEVEL / GOLF ALTERNATIVE

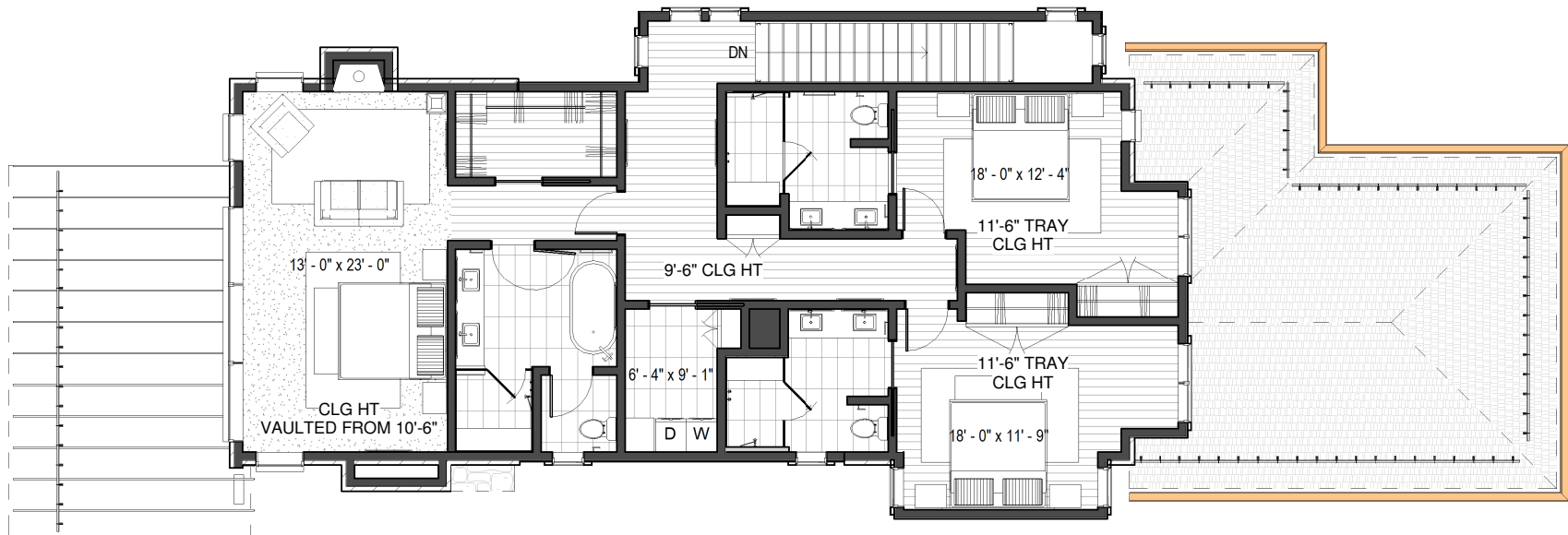


*Lower Level - 1,895 SF / Deck - 250 SF / Mechanical - 102 SF*



# UPPER LEVEL

Upper Level - 1,559 SF



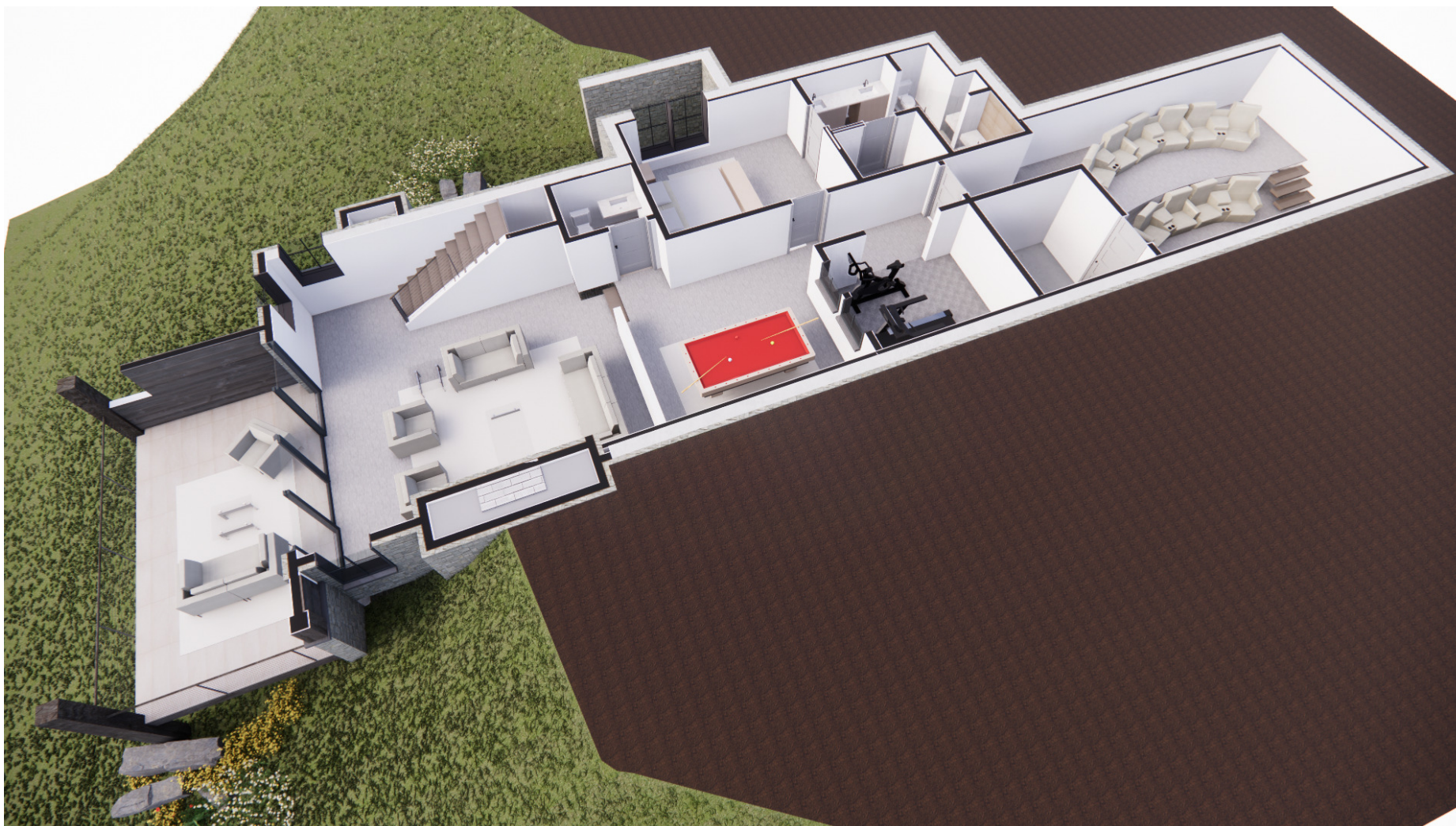
# MAIN LEVEL

*Main Level - 1,461 SF / Deck - 270 SF / Garage - 469 SF*



# LOWER LEVEL

*Lower Level - 1,895 SF / Deck - 250 SF / Mechanical - 102 SF*



# UPPER LEVEL

*Upper Level - 1,559 SF*





# Floor Plan STONEHAVEN

*Located in Wohali Village*



**Onie Bolduc**

435.631.1615



Summit | **Sotheby's**  
INTERNATIONAL REALTY

This material is based upon information that we consider reliable, but because it has been supplied by third parties, we cannot represent that it is accurate or complete, including price, or withdrawal without notice; square footage is an estimate only. ©MMXXIV Sotheby's International Realty Affiliates, Inc. All Rights Reserved. Sotheby's International Realty® is a licensed trademark to Sotheby's International Realty Affiliates, Inc. An Equal Opportunity Company. Each Office Is Independently Owned And Operated. Copyright© Summit Sotheby's International Realty 2024.